

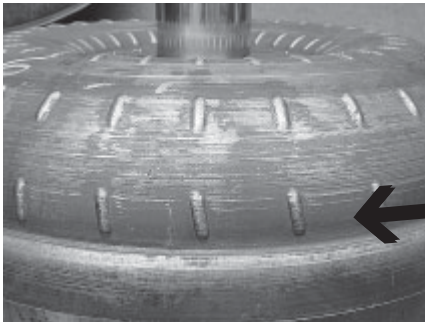
June 20, 2005

# FORD 4R-100 & 5R-110

## The Torque Converters Are Different

### 4R-100 5R-110

### .....Impellers.....

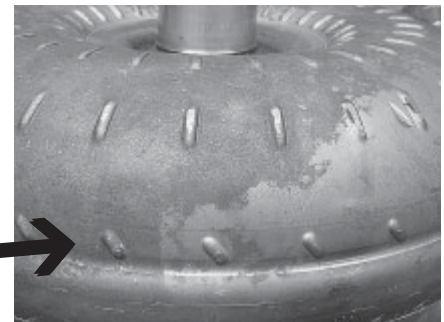


The E4OD - 4R-100 torque converters are 105K. The 105K is a Low-Stall converter for 7.3 Liter Diesel (some Gas) Applications. 2002 or earlier.

There is a major stall speed difference in the 7.3L & 6.0L Ford Diesel converters.

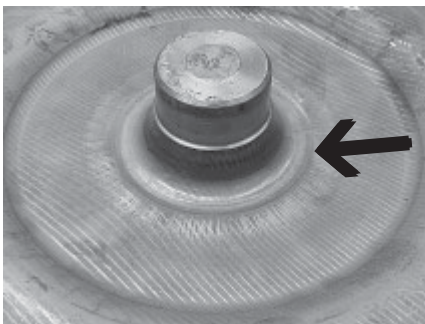
7.3L Low Stall

Extra Low Stall 6.0L  
The last row of dimples are angled hard right and are shorter than the 7.3L



The 2003-up 5R-110 torque converters are 95K. The 95K is an Ex-Low-Stall converter for 6.0 Liter Diesel Applications.

### .....Covers.....



7.3L Long Pilot

Short Pilot 6.0L  
Pilot is recessed at the base and is shorter than the 7.3L



## 4R-100

HD3686-6-2

Multi-Clutch

Low-Stall Speed 105K

HD3696-6-2

Multi-Clutch & Billet Cover

Low-Stall Speed 105K

**CAUTION: DO NOT  
SUBSTITUTE OR MIX  
THE 7.3L & 6.0L  
CONVERTERS**

## 5R-110

HD3687-6-2

Multi-Clutch

Extra-Low-Stall Speed 95K

Billet Cover Not Available

For Additional Information Contact Dacco Customer Service 1-800-443-2226

